

Service Challenge dCache at FZK

Forschungszentrum Karlsruhe GmbH
Institute for Scientific Computing
P.O. Box 3640
D-76021 Karlsruhe, Germany

Dr. Doris Ressmann



doris.ressmann@iwr.fzk.de

Dr. Silke Halstenberg



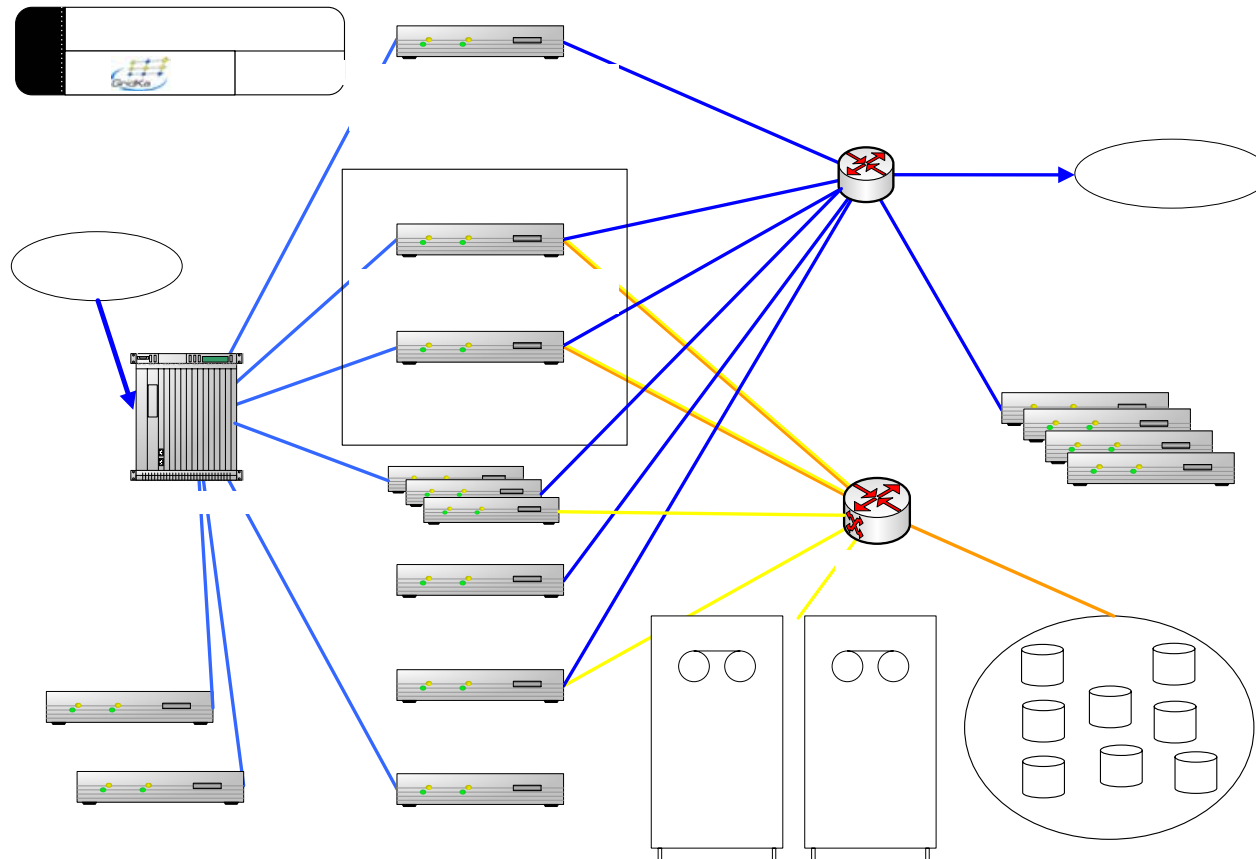
silke.halstenberg@iwr.fzk.de

<http://www.gridka.de>

Introduction

- dCache environment
- Pool behaviour
- Ganglia screen shots
- File systems
- Tape Connection
- Conclusion

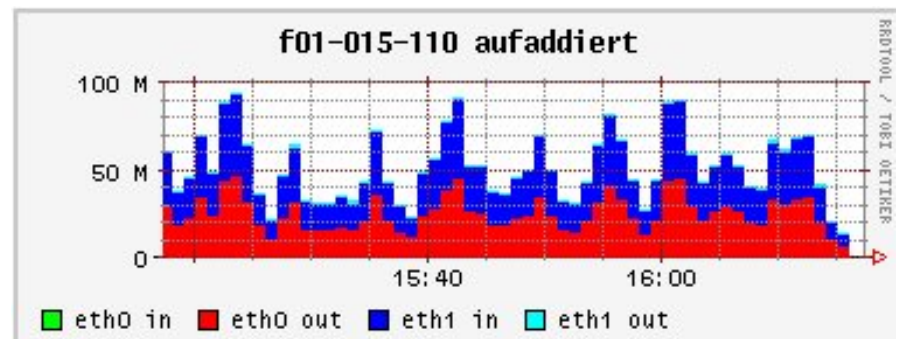
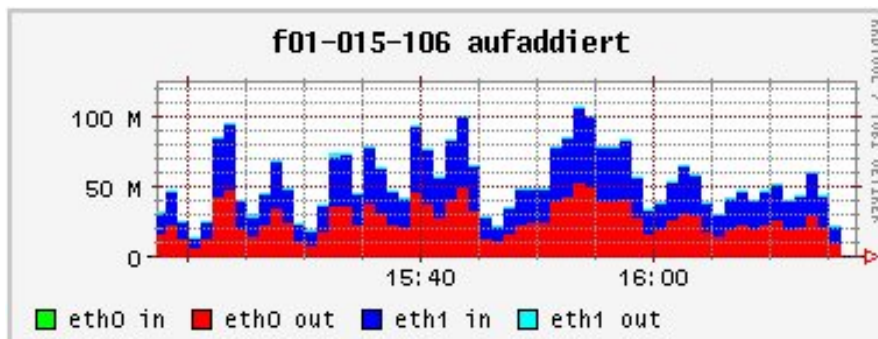
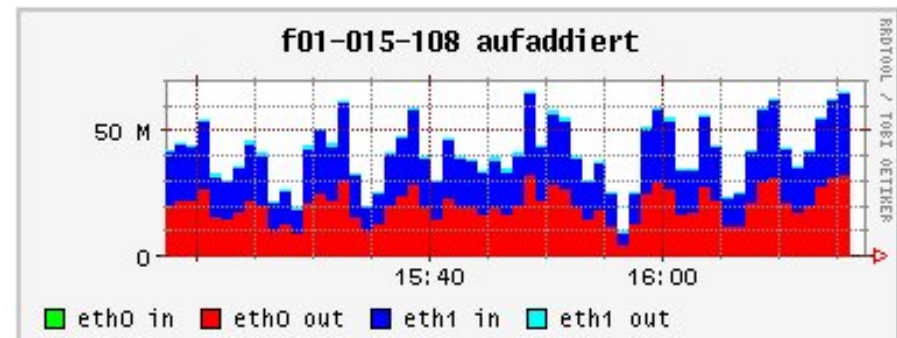
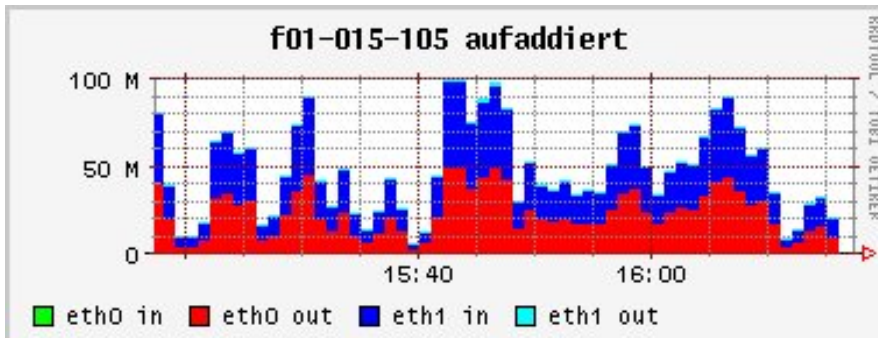
dCache environment



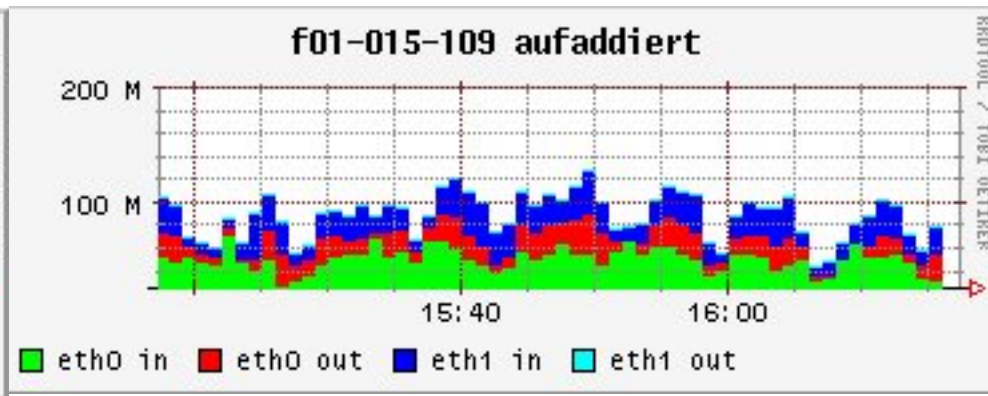
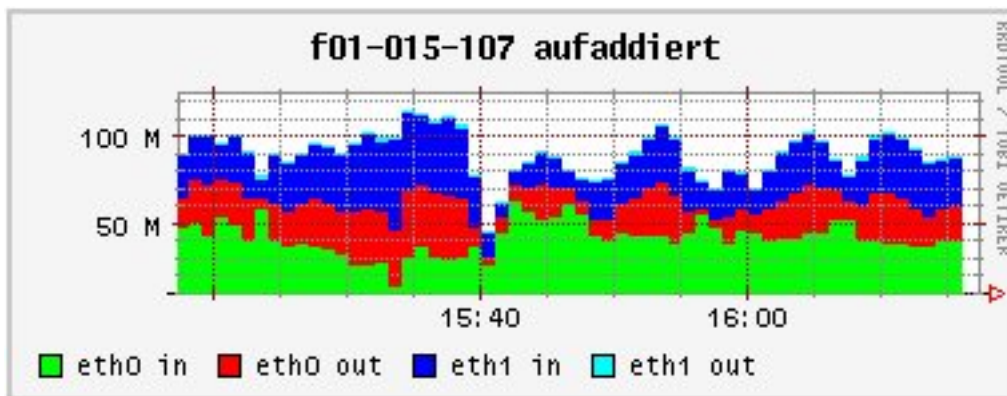
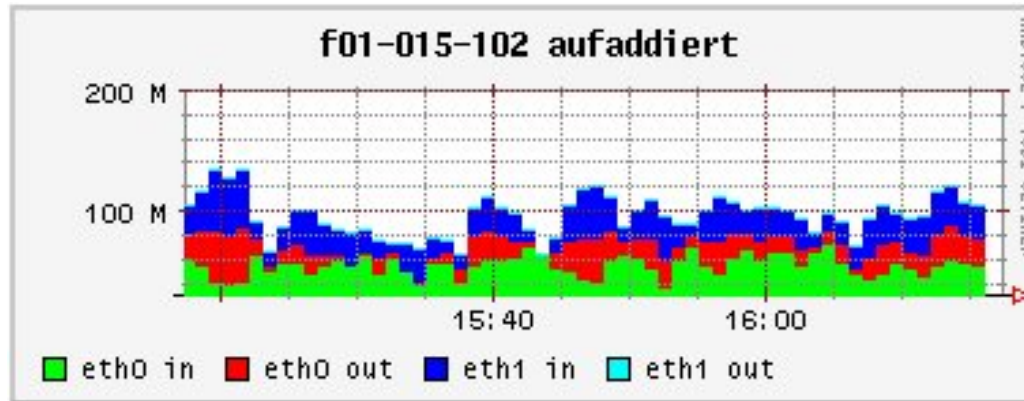
Forschungszentrum Karlsruhe
in der Helmholtz-Gemeinschaft

	DESY-FZK		FZK - DESY		Castor -FZK	FZK-Castor	FZU-FZK		FZK-FZU	
	f	t	f	t			f	t	f	t
pushmode (false/true)	f	t	f	t	f	t	f	t	f	t
F01-015-101-e	X	✓	✓	✓	X	X	X	✓	✓	✓
F01-015-105-e	X	✓	✓	X	X	X	X	✓	✓	X
F01-015-106-e	X	✓	✓	X	X	X	X	✓	✓	X
F01-015-108-e	X	✓	✓	X	X	X	X	✓	✓	X
F01-015-110-e	X	✓	✓	X	X	X	X	✓	✓	X
F01-015-102-e	✓	✓	✓	✓	✓	X	X	✓	✓	✓
F01-015-107-e	✓	✓	✓	✓	✓	X	X	✓	✓	✓
F01-015-109-e	✓	✓	✓	✓	✓	X	X	✓	✓	✓

Ganglia screen shots from 29.08.05



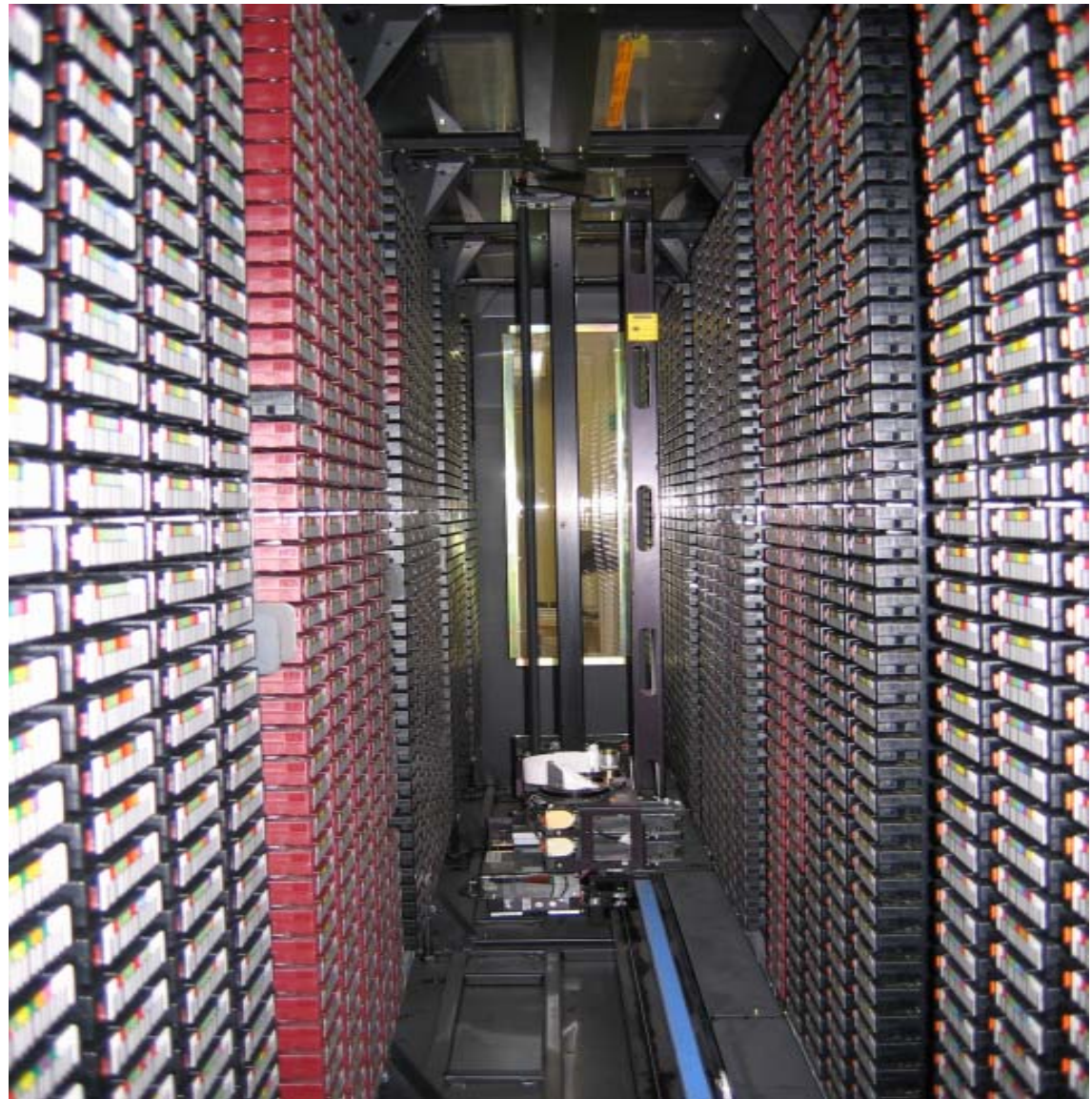
Ganglia screen shots from 29.08.05



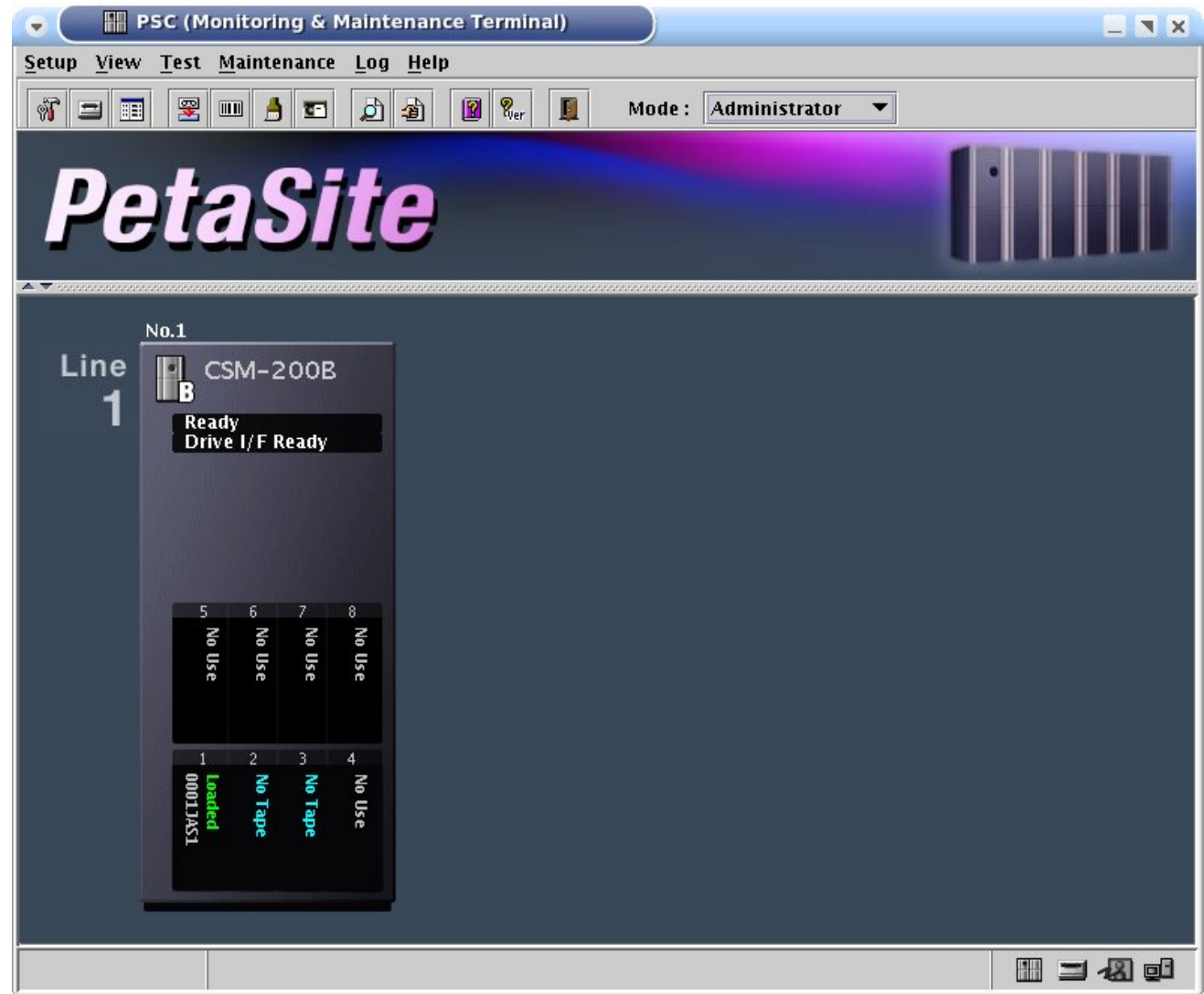
File systems

- Pool nodes on ext3 filesystems
 - to delete files the pools were disabled and could not be used for hours
- Pool nodes on gpfs filesystems
 - is working fine

Production library



Library for service
challenge



Conclusion and Future Work

- Pool configuration / network setup
 - since last dCache upgrade
- Connection to tape library
- FTS server is operational
- FTS put creates extra transfer between gsiftp-doors and pool nodes
- LCG storage element is it used for SC3?

- More at <http://www.gridka.de/SC/sc.html>

Thank you for your attention!
Questions?